

REIN LANGEVELD

HEIGHT:183 | BUST:92 | WAIST:79 | HIPS:93 | SHOES:44 | SUIT:48 | HAIR:BLONDE | EYES:GREY-BLUE



NO TOYS

REIN LANGEVELD



NO TOYS

REIN LANGEVELD



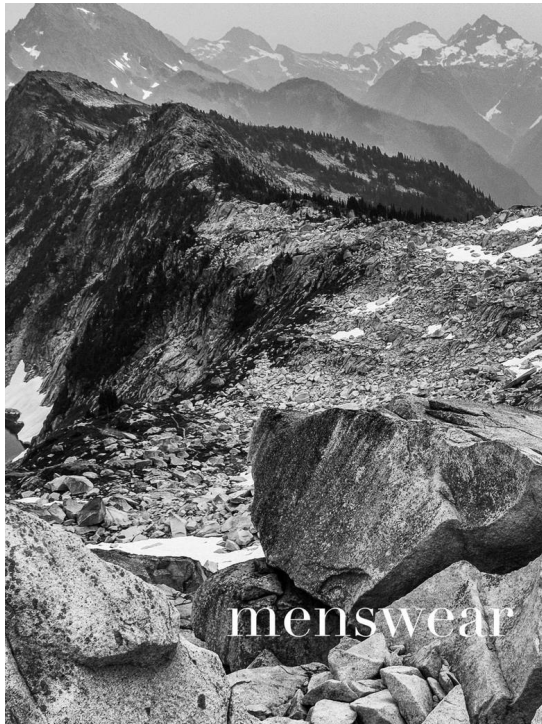
NO TOYS

REIN LANGEVELD



NO TOYS

REIN LANGEVELD



NO TOYS

REIN LANGEVELD



NO TOYS

REIN LANGEVELD



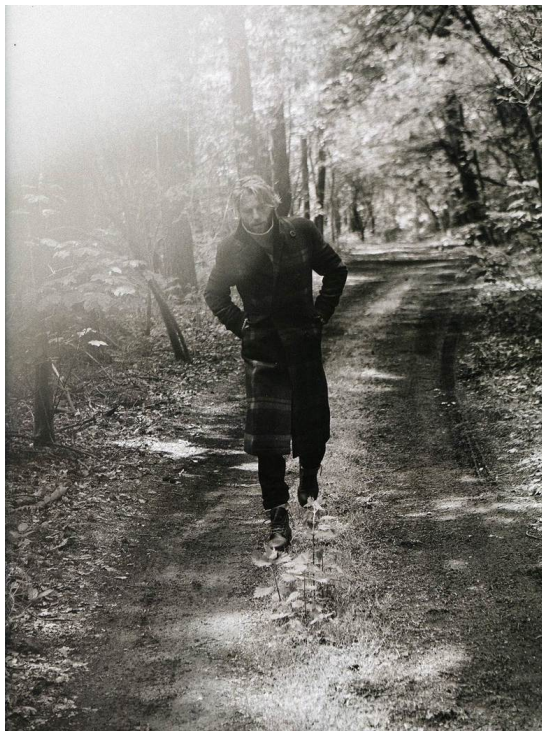
NO TOYS

REIN LANGEVELD



NO TOYS

REIN LANGEVELD

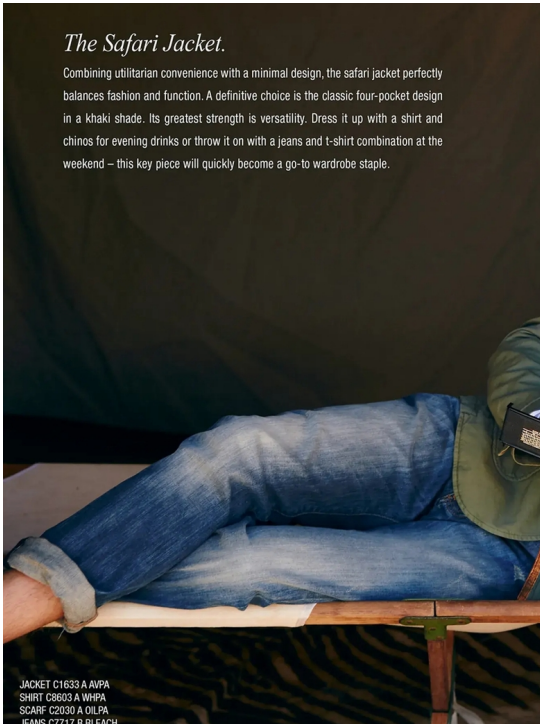


NO TOYS

REIN LANGEVELD

The Safari Jacket.

Combining utilitarian convenience with a minimal design, the safari jacket perfectly balances fashion and function. A definitive choice is the classic four-pocket design in a khaki shade. Its greatest strength is versatility. Dress it up with a shirt and chinos for evening drinks or throw it on with a jeans and t-shirt combination at the weekend – this key piece will quickly become a go-to wardrobe staple.

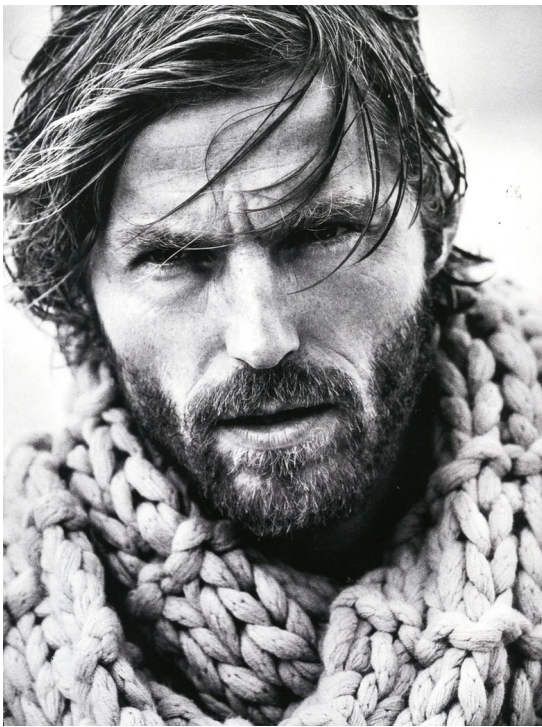


JACKET C1633 A AVPA
SHIRT C8603 A WHPA
SCARF C2030 A OILPA
JEANS C2717 B BL FACH



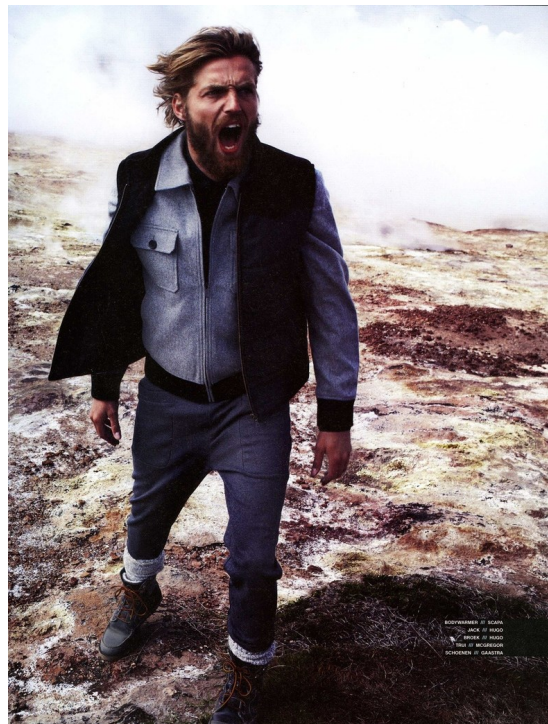
NO TOYS

REIN LANGEVELD



NO TOYS

REIN LANGEVELD



NO TOYS

REIN LANGEVELD



BLAZER C1807 B Z0016
SHIRT C8611 A Z6518
PANTS C7530 C Z0016
TIE C2254 NY
POCKET SQUARE C2038 NY
REFIT: 2/21/14 / CRU PA

NO TOYS

REIN LANGEVELD



NO TOYS