

# JULINA

HEIGHT:175 | BUST:88 | WAIST:61 | HIPS:89 | SHOES:38 | HAIR:BROWN | EYES:BLUE GREEN



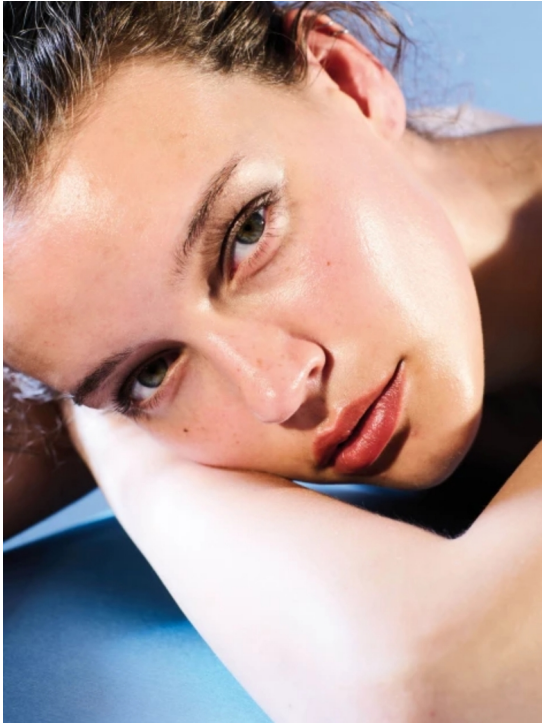
NO TOYS

# JULINA



# NO TOYS

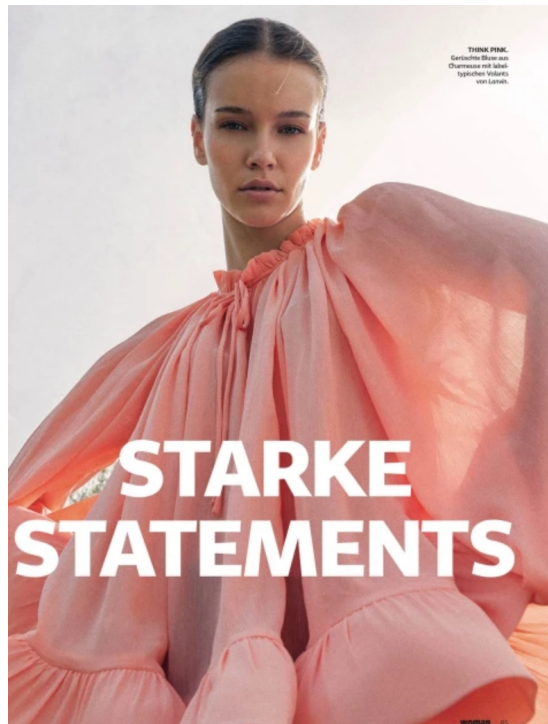
# JULINA



MODE & BEAUTY



**BROKAT & STATEMENT-ACCESSOIRES.** Teilene Jahre an Funktionen  
beigant mit Claque-Effekt und „fittes“ Ölterge, beides von Dior.  
St. Gouffière am Hals von Marc Cain.



**THINK PINK.**  
Gefülltes Blau aus  
Cherresse mit lächelnd  
typischer Silhouette  
von Lanth.

**STARKE  
STATEMENTS**

PHOTOS & STYLING: JANE VON BUCHHEIM/STUDIO. HAAR: WOLFGANG GÖTTSCHEWITZ/STUDIO. MAKEUP: ANJA WITTE/STUDIO. HAAR: WOLFGANG GÖTTSCHEWITZ/STUDIO. MAKEUP: ANJA WITTE/STUDIO.

# NO TOYS

# JULINA



**MODE & BEAUTY**

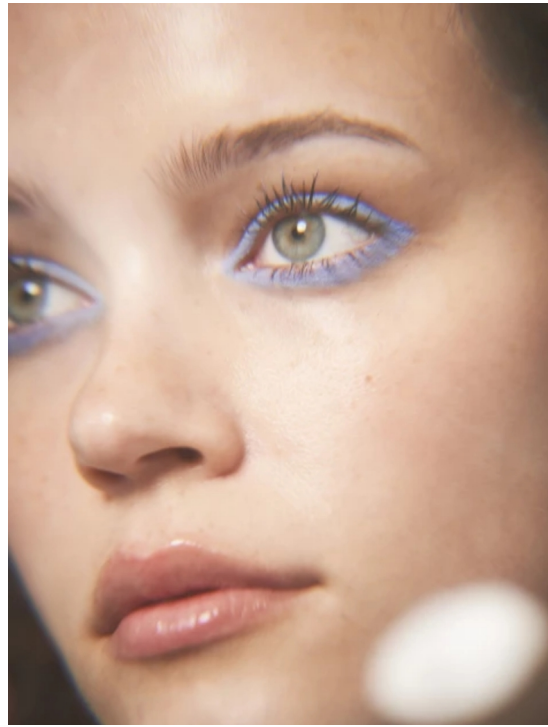
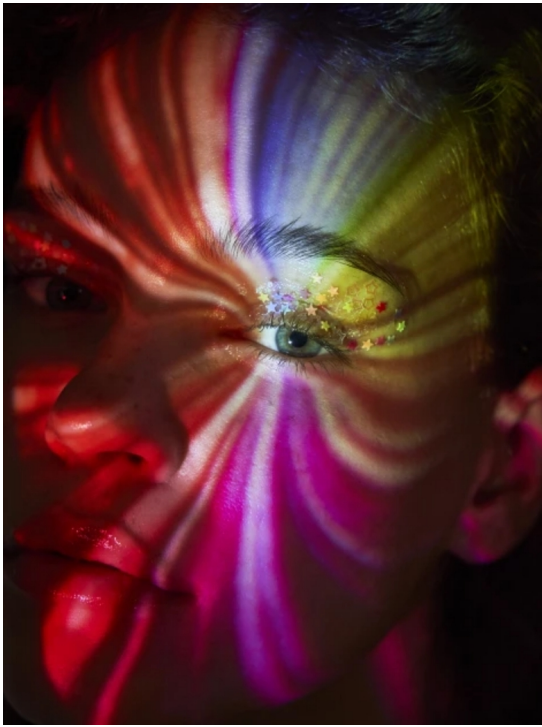
Ob Volants, Volumen, Farbeffekte, besondere Materialien oder auffällige Accessoires: Der Zauber eines gelungenen Looks LIEGT IN DEN DETAILS. Schließlich verleihen sie den aufregenden Herbst-Keypieces erst die persönliche Note.

REDAKTION: MICHAELA STRACHWITZ



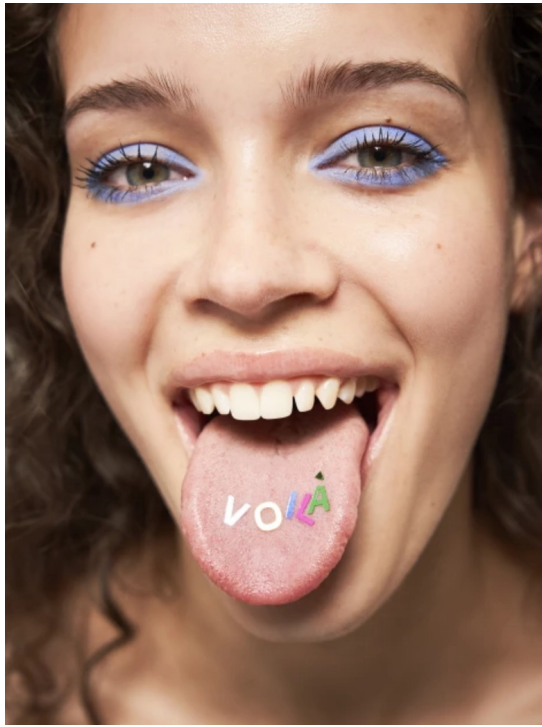
# NO TOYS

JULINA



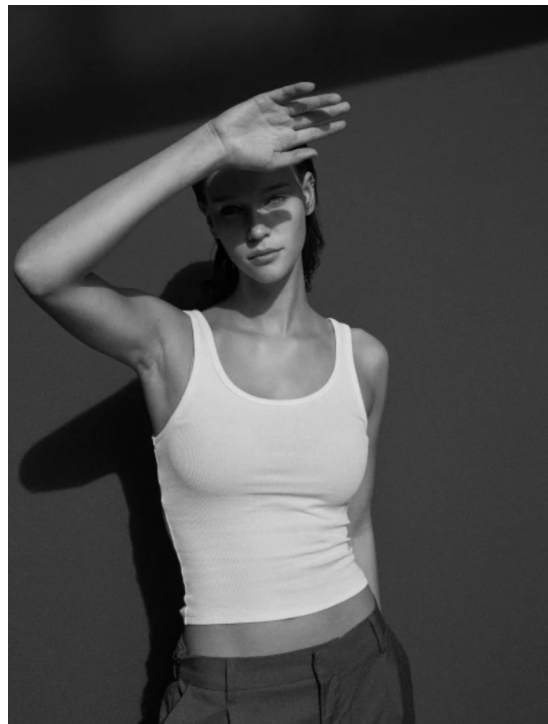
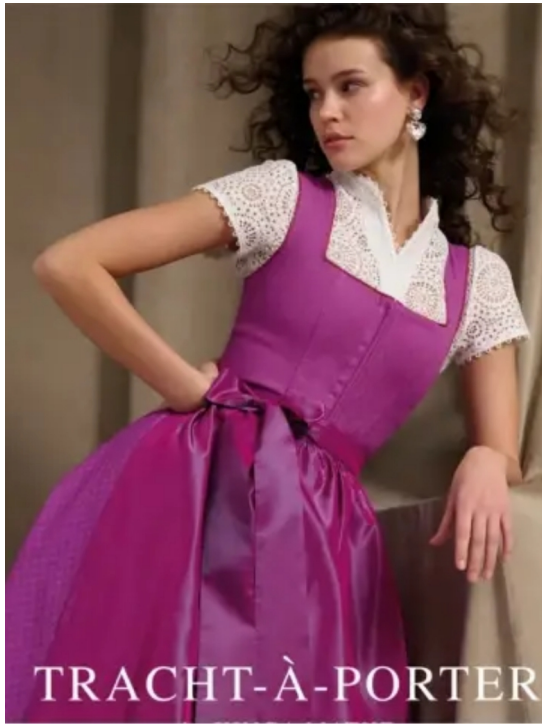
NO TOYS

# JULINA



# NO TOYS

# JULINA



# NO TOYS

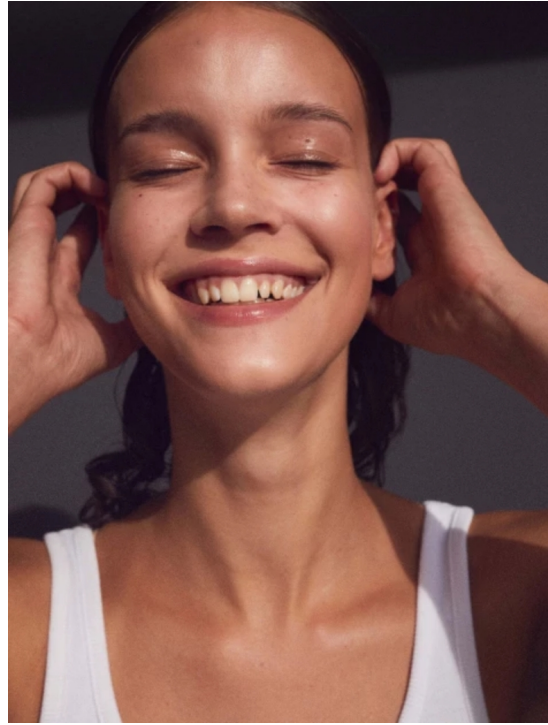
# JULINA



# NO TOYS

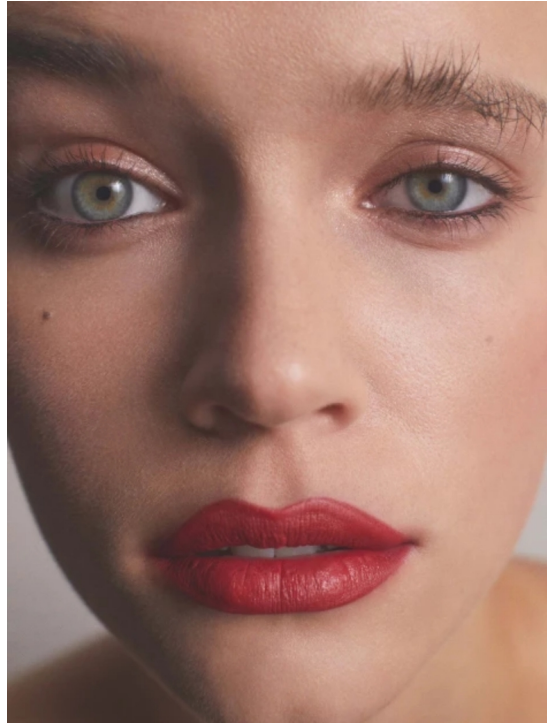


# JULINA



# NO TOYS

# JULINA



# NO TOYS

# JULINA



# NO TOYS

JULINA



NO TOYS